

DEIS

Sediment Management Facility & Maintenance Dredging

*Scoping Session
March 31, 2011*

*Funding Provided by NY Department of State Division of Coastal Resources
under Title 11 of the Environmental Protection Fund
NYS Comptroller Contract #C006737*



Topics

- Dredging Project Update
 - Project need and benefit
 - Siting a sediment management facility
- Scoping the Draft Environmental Impact Statement
 - Defining the Action
 - Potential environmental impacts
 - Alternatives considered
 - Projected timeline
- Comments on Draft Scoping Document

Dredging Project Update

Need For and Extent of Dredging
Sediment Management Facility Siting

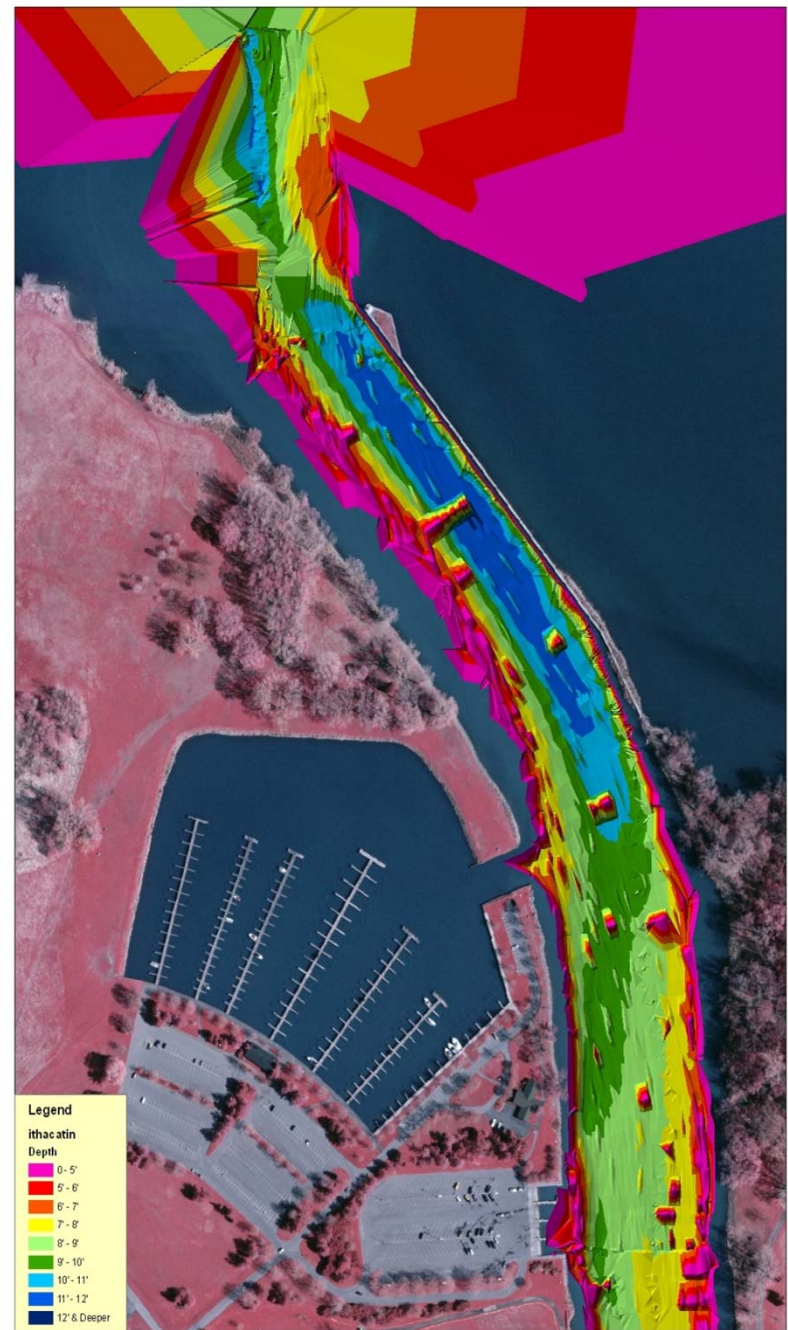


Recent Dredging History

- Limited dredging since Flood Control Works (FCW) completed in 1970
 - 1980-1982 Approx. 200,000 cy material removed from lower Inlet, dewatered at Treman; created new parkland
 - 1997 Emergency repairs at fish ladder, after Jan. 1996 thaw-flood; upland disposal
 - 1999 Dredging within the Flood Control Channel (ACOE), 75,000 cy removed, dewatered on barges; upland disposal
- Lack of sediment management facility cited as reason

Channel Condition and Impairments

- Soundings by Canals in 2008
- Stakeholder interviews
- ACOE hydrologic and hydraulic modeling





Estimate Amount of Sediment to Remove

- To create a navigation channel in Canal Corporation's jurisdictional area:
 - 10 ft. deep; 100 ft. wide: approx. 70,000 cubic yards
- To restore the Flood Control Works to the original design capacity:
 - approx. 400,000 – 600,000 cubic yards
- To deepen lower reaches of Cascadilla Creek:
 - approx. 25,000 cubic yards



Impact of Sedimentation

- Lost recreational and navigational access
- Diminished capacity to handle storms and snowmelt events
- Risk of failing inspection of flood control works- necessary to maintain eligibility for federal emergency assistance
- Lost economic development opportunities



Agency Responsibilities

- Corps of Engineers: constructed FCW, annual inspection & report to NYSDEC, provide emergency relief and assistance if properly maintained
- NYSDEC: responsible for maintaining FCW
- Canal Corporation: responsible for navigational dredging in their jurisdictional area
- City of Ithaca: responsible for ordinary maintenance of the FCW and interested in maintaining marinas

Jurisdictional Areas



Document Sediment Quality

- Core sampling along Cayuga Inlet and lower Cascadilla Creek: Nov 2008
- Sediments can be managed as Class A (uncontaminated)
- Low organic content
- Mixture of sand (35%), silt (45%) and clay (20%)

Site Selection Summary

Site	Size	Why Not Selected
Cass Park	87 ac	Existing uses, alienation
Newman Golf Course	77 ac	Existing uses, alienation
Festival Lands	15.3 ac	Size and alienation
Treman Park	Variable	Parkland conversion
NYSDOT Facility	5.7 ac	Size and timetable for availability
Constructed Wetland	Variable	Against current NYSDEC and DOS policies, cost and risk of failure
In-water disposal	Variable	Against current NYSDEC and DOS policies
Upland in Inlet Valley	Variable	Distance and fuel for pumping
Southwest Area	65 ac	Preferred alternative



Recommendation: Southwest

- Utilize portion of the SW site for sediment management facility
 - Larger footprint (+/- 20 acres) initially to remove large accumulation
 - Smaller footprint (+/- 8 acres) in future for maintenance dredging
- Compatible with development plans and schedule, and neighborhood character
- Extensive site characterization work and wetland delineation completed

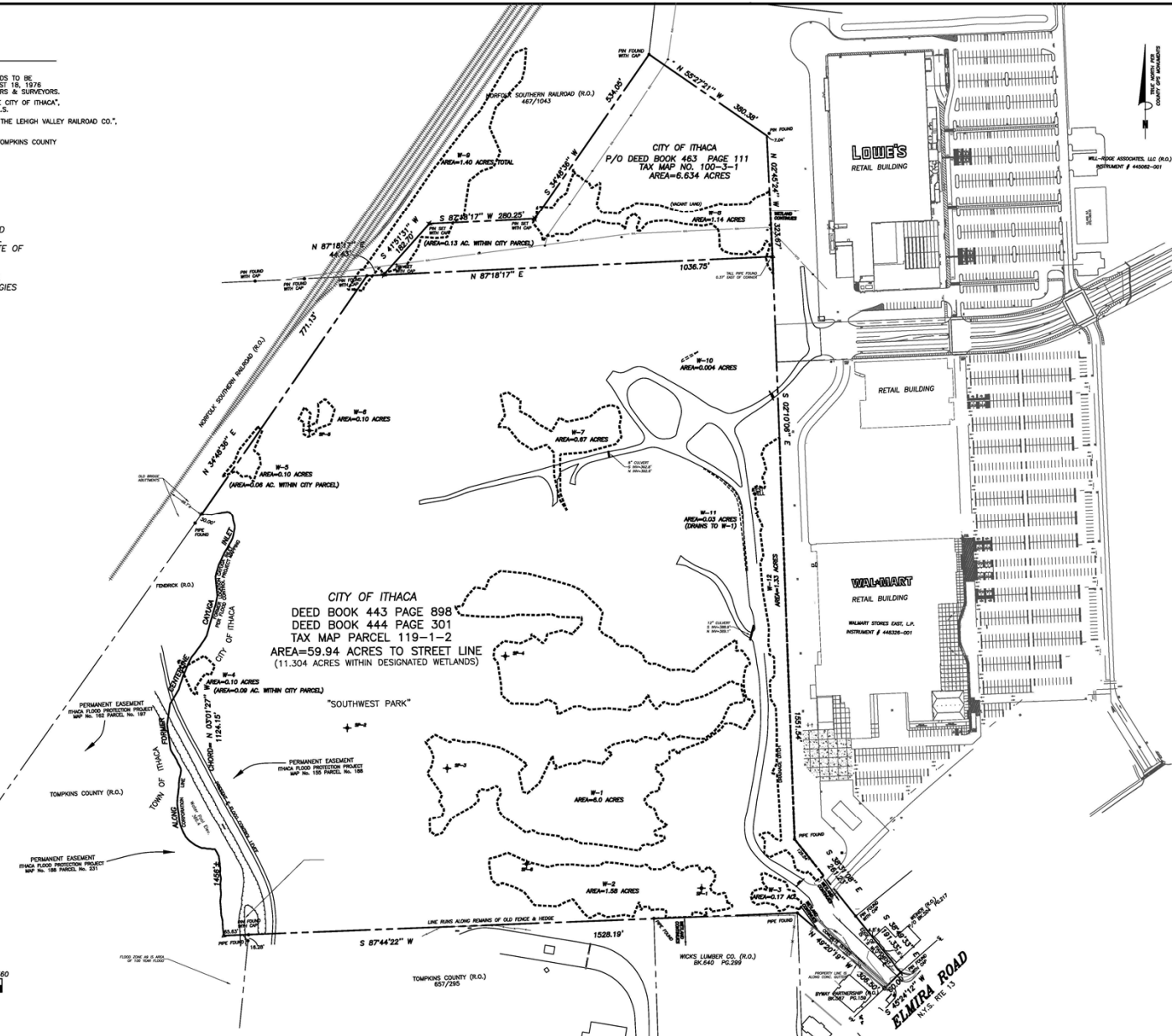
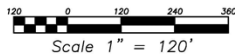
REFERENCE MAPS

- 1) MAP TITLED "GENERAL LAND ACQUISITION MAP OF LANDS TO BE ACQUIRED BY THE STATE OF NEW YORK," DATED AUGUST 18, 1918 REVISIONS JUNE 6, 1978 BY T.G. MILLER P.C. ENGINEERS & SURVEYORS.
- 2) MAP TITLED "PROPOSED ACQUISITION OF LAND BY THE CITY OF ITHACA," DATED FEBRUARY 18, 1963 BY JOHN A. DOUGHERTY L.L.C.
- 3) MAP TITLED "SURVEY OF LANDS TO BE ACQUIRED BY THE LEHIGH VALLEY RAILROAD CO.," DATED FEBRUARY 15, 1966 BY O'BRIEN & GERE.

THE ABOVE REFERENCED MAPS ARE ON FILE AT THE TOMPKINS COUNTY CLERK'S OFFICE.

NOTES:

- 1) FLOOD ZONE INFORMATION PER FLOOD INSURANCE RATE MAP COMMUNITY PANEL NUMBER 360850 0003 B EFFECTIVE DATE OF SEPT. 30, 1981.
- 2) TOPOGRAPHIC AND PLANIMETRIC DATA PROVIDED BY BARTON AERIAL TECHNOLOGIES FLOWN SPRING 2008.





T. G. MILLER P.C.
ENGINEERS AND SURVEYORS
203 NORTH HANCOCK STREET
P.O. BOX 777
ITHACA, NEW YORK 14851

SURVEY MAP FOR CITY OF ITHACA
ELMIRA ROAD
CITY OF ITHACA, TOMPKINS COUNTY, NEW YORK

DATE	REVISION	BY
7/7/2008	NEW SURVEY BOUNDARY	EDR

Warning

ALTERATIONS TO THIS MAP NOT CONFORMING TO SECTION 2206, EDUCATION LAW, ARE PROHIBITED BY LAW. ALL CORRECTIONS HEREON ARE MADE FOR THIS MAP AND COPIES THEREOF ONLY BY THE SURVEYOR. SIGNATURE OF THE LICENSED LAND SURVEYOR MUST APPEAR HEREON.

LEE DRESSER, L.S.
N.Y.S. LICENSE No. 050096

SIGNATURE
LICENSED LAND SURVEYOR

SCALE

PROJECT

SHEET TITLE
BOUNDARY MAP

DATE: 11/5/2007	JOB No. S07671
SCALE: 1"=120'	SHEET
DRAWN BY: EDR	1 OF 1
CHECKED BY: ATF	



Implementation Strategy

- Completing SEQR allows access to funds for final design, permitting & construction
- Develop sediment management facility
 - Immediate use by Canal Corporation to dewater sediments removed for navigational dredging (already permitted)
 - Dewatering site for Cascadilla Creek sediments
 - Potential dewatering site for dredging for flood control by state and/or federal agencies (maintenance of flood control may be Type II action and SEQR exempt)
- Most dried sediment to be removed for re-use or ultimate disposal

DEIS and Scoping





Definition of the Project

- Develop sediment management facility at Southwest
 - Cut and fill to construct basins
 - Piping to convey slurry to site
 - Booster pumps
 - Return flow to waterways
 - Site layout and access roadways
- Remove sediment deposited within lower Cascadilla Creek
- Remove dried sediments from site



Project Assumptions

- Hydraulic dredging primarily, floating pipe directs slurry to Sediment Management Facility for dewatering
- Initial basin sizing to accommodate up to 125,000 cy/yr
- Basins to be lined to minimize groundwater seepage
- Anticipate permit condition to protect fishery

Multiple Permits and Approvals

Agency	Permit/Approval
NYSDEC	Joint application, SPDES, stormwater, environmental justice, water quality certification
ACOE	Joint application, construction in navigable waters, wetland jurisdictional determination at Southwest, approval UDS
DOS	Coastal consistency form
Norfolk Southern	Railway right-of-way
OGS	Underwater lands easement (for in-lake disposal)
City of Ithaca	Construction permit (if pump station), fill permit
OPRHP	Cultural resources survey
Town of Ithaca	Land disturbance (if excavation under railway)
NYSEG	Requirements for utility right-of-way and setbacks



SEQR Designations

- City of Ithaca- Project Sponsor
- NYSDEC- Lead Agency
- Involved Agencies
 - Corps of Engineers
 - Canal Corporation
 - DASNY (funding)
 - Department of State (Coastal Consistency Review)
 - City of Ithaca Board of Public Works



Interested Parties for SEQR

Tompkins County Planning Dept.
Norfolk Southern Railroad
NYS Office of General Services
Tompkins County Health Dept.
U.S. Fish and Wildlife Service
NYS Dept. of Transportation
Town of Ithaca
Environmental Management Council
OPRHP

Tompkins County Soil & Water Conservation District
City of Ithaca Conservation Advisory Council
Tompkins County Water Resources Council
Government & Community Relations, Cornell University
Cayuga Lake Watershed Network
Cayuga Lake Cruises
Friends of Newman Golf Course
NYSEG



Scoping

- Focused list of issues to be addressed in DEIS
- Outline posted on project web site:
<http://www.ecologicllc.com/ithacadredging.html>
- Scoping sessions- March 31, 2011
 Afternoon: Involved & Interested Parties
 Evening: General Public
- Deadline for comments: April 11, 2011
 Send to info@ecologicllc.com or planning@cityofithaca.org



Environmental Issues with Potential for Adverse Impact and Mitigation

- Impact on land
 - Creation of sediment basins and infrastructure at SW
 - Siting booster pumps
- Impact on transportation
 - Removal of dried material
- Impact on energy
 - Fuel consumption to remove, process and transport sediment
- Impact on air
 - Dust from sediment handling; vehicle exhaust



Issues Examined and Determined to Not Pose Significant Adverse Impacts

- Water & wetlands
- Plants & animals
- Aesthetic resource
- Historic & archaeological resources
- Open space & recreation
- Community character & land use
- Public health & safety
- Noise and odors



Alternatives to be Considered

- No action
- Deep water disposal of sediment in Cayuga Lake
- Alienation of existing parkland
- Deposition of sediment to create islands or extend shoreline
- Multiple smaller sediment processing sites

Questions on Presentation



<http://ecologicllc.com/ithacadredging.html>

info@ecologicllc.com

lnichola@cityofithaca.com

Comments on Scoping

jmdlugol@gw.dec.state.ny.us

Joseph Dlugolenski, NYSDEC

1285 Fisher Ave

Cortland NY 13045-1090

Phone 607-753-3095 ext. 233



Environmental Issues with Potential for Adverse Impact and Mitigation

- Impact on land
 - Creation of sediment basins and infrastructure at SW
 - Siting booster pumps
- Impact on transportation
 - Removal of dried material
- Impact on energy
 - Fuel consumption to remove, process and transport sediment
- Impact on air
 - Dust from sediment handling; vehicle exhaust